



BeltMaster Shop & Field Equipment



Price Rubber Corp.

**MANUFACTURERS OF CUSTOM ENGINEERED BELT SLITTERS,
WINDERS, STANDS & MORE Since 1960**

SHOP SLITTERS OR



5,000 LB. CAPACITY METERING TABLE STANDARD & CUSTOM DESIGNS BY



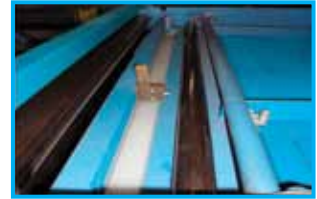
* MODEL #: EQ5KSTM60

Electrical
control w/



hydraulic
motor

Belt
guides



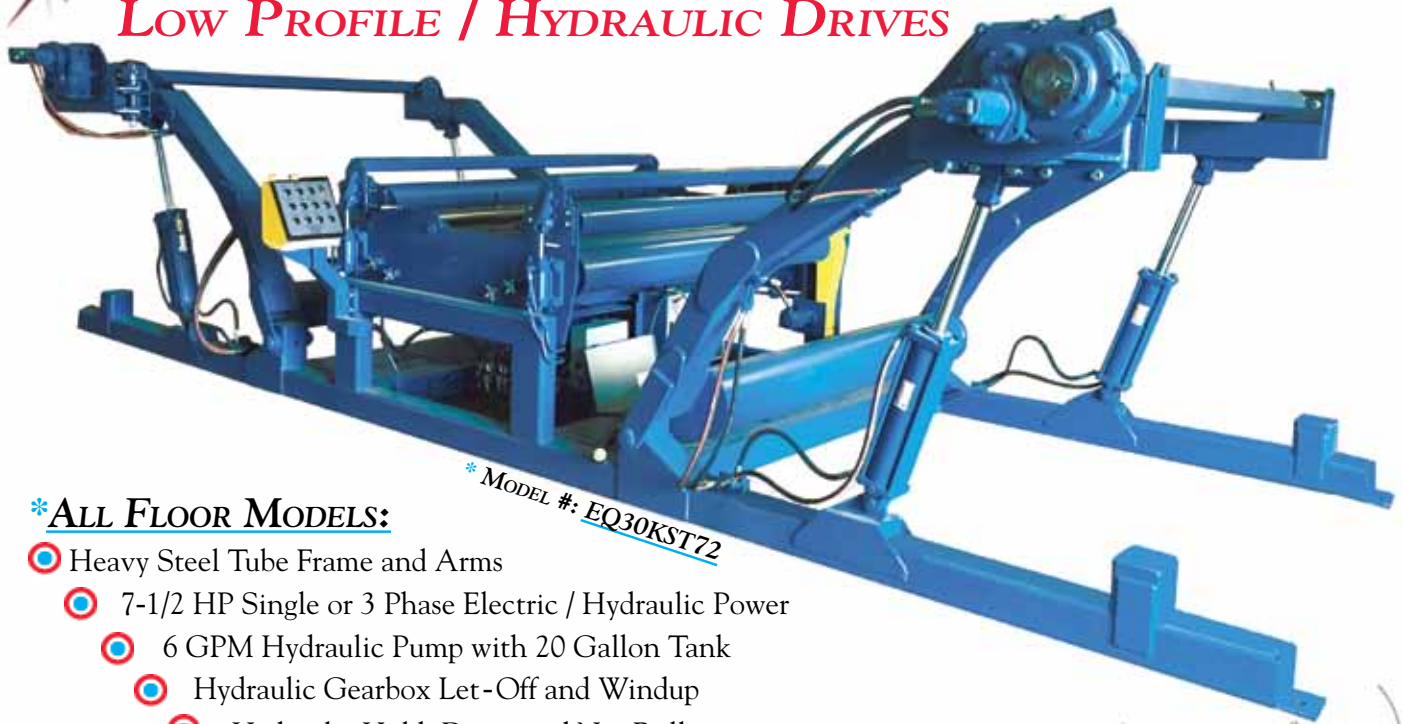
blades
&
blocks

For the larger shop or warehouse. Years of satisfaction at man-sized economy. For slitting and metering belting at an economical cost, these machines are precision designed and easily operated by one man. The self contained hydraulic drives are reversible with variable speed controls in both directions.

This equipment will serve well in shop or warehouse. Low initial cost and almost maintenance free operation give prompt return on a modest investment plus many years of satisfaction.



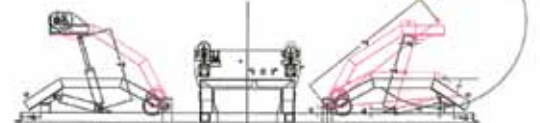
20,000 LB. & 30,000 LB. CAPACITY LOW PROFILE / HYDRAULIC DRIVES



* MODEL #: EQ30KST72

*ALL FLOOR MODELS:

- ⊙ Heavy Steel Tube Frame and Arms
- ⊙ 7-1/2 HP Single or 3 Phase Electric / Hydraulic Power
- ⊙ 6 GPM Hydraulic Pump with 20 Gallon Tank
- ⊙ Hydraulic Gearbox Let-Off and Windup
- ⊙ Hydraulic Hold-Down and Nip Rollers
- ⊙ Oversized Hydraulic Cylinder Lifting Arms
- ⊙ 46" Comfortable Working Table Height



*New innovative designs now in production

BIG FACTORY JOBS

UP TO 50,000 LB. CAPACITY FOR THE PROFESSIONAL BELT SHOP



All hydraulic and computer operated, these big fellows handle the largest rolls in the industry.

We use these in our production lines to handle tandem windups of rolls.

Can be built free standing as shown, or with overhead crane for loading and unloading. **Price** makes it easy.

One man operation from on deck computer controls gives accurate slitting, trimming and windup of the largest belts. Incorporates all the latest features for power, economy and safety.

These machines stand at the top of belt handling equipment.

Worldwide



* **SPEED: 0-10.5 RPM (20K UNIT)**
0-6.6 RPM (30K UNIT)

★ 20-30K CAPACITY SLITTERS

Belt Width	Throat - Max.	Roll Weight	Power & Features
60"	4'	20,000 lbs.	7-1/2 HP electric motor (220V single or 440V three phase current). 6 GPM hydraulic pumping unit with 20 gallon reservoir tank. Hydraulic powered let-offs / hold-down / nip rollers / self-contained directional gearbox drives. Adjustable knife holders with blades plus belt counter.
72"	4'	20,000 lbs.	
72"	5'	30,000 lbs.	
84"	5'	30,000 lbs.	
96"	5'	30,000 lbs.	

★ 50K CAPACITY FACTORY JOBS

72"	11.9	50,000 lbs.	Heavy duty hydraulic pumping unit (220V or 440V three phase). Hydraulic powered let-offs / hold-down / nip roller assemblies. Independent wind-up stanchions for overhead crane loading. Computerized electric console with drive by wire controls. Electric belt guides, adjustable knife blocks, blades, belt counter, the works.
84"	11.9	50,000 lbs.	
96"	11.9	50,000 lbs.	

TABLE DIMENSIONS



BeltMaster Slitters are the standard of the industry.

Designed for continuous production use in the **Price** factories, these units prove themselves everyday.

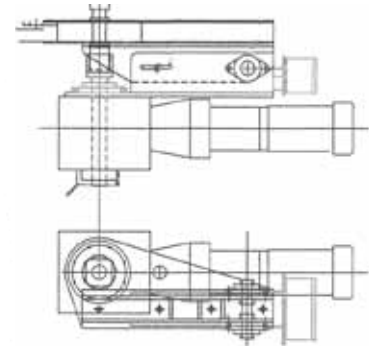
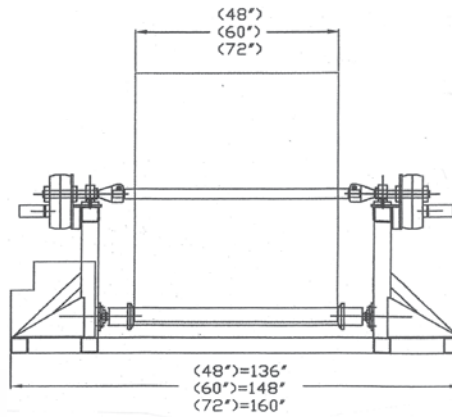
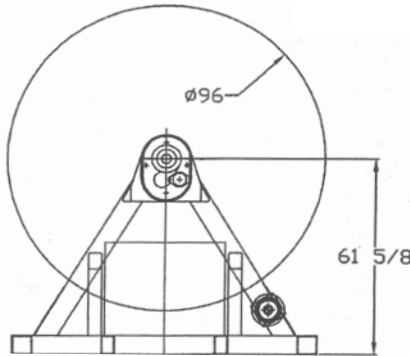
We keep the design up to date because our success depends upon them. They are made by skilled engineers and machinists, and will serve you for a lifetime. They don't come any better than this.

Model #	Belt Width	Roll		Machine		
		Wt. lbs.	Dia.	Width	Length	Wt. lbs.
EQ5KSTM60	<u>60" on Casters</u>					
	220V Single Phase	5,000	48"	100"	120"	4,000
EQ20KST72	<u>72" Floor Model</u>					
	220V Single Phase	20,000	96"	124"	244"	9,500
	220 /440V Three Phase	20,000	96"	124"	244"	9,500
EQ30KST72	<u>72" Floor Model</u>					
	220V Single Phase	30,000	120"	124"	292"	10,000
	220 /440V Three Phase	30,000	120"	124"	292"	10,000
EQ20KST84	<u>84" Floor Model</u>					
	220V Single Phase	20,000	96"	136"	244"	10,000
	220 /440V Three Phase	20,000	96"	136"	244"	10,000
EQ30KST84	<u>84" Floor Model</u>					
	220V Single Phase	30,000	96"	136"	244"	10,500
	220 /440V Three Phase	30,000	96"	136"	244"	10,500
EQ30KST96	<u>96" Floor Model</u>					
	220V Single Phase	30,000	120"	136"	292"	11,000
	220 /440V Three Phase	30,000	120"	136"	292"	11,000

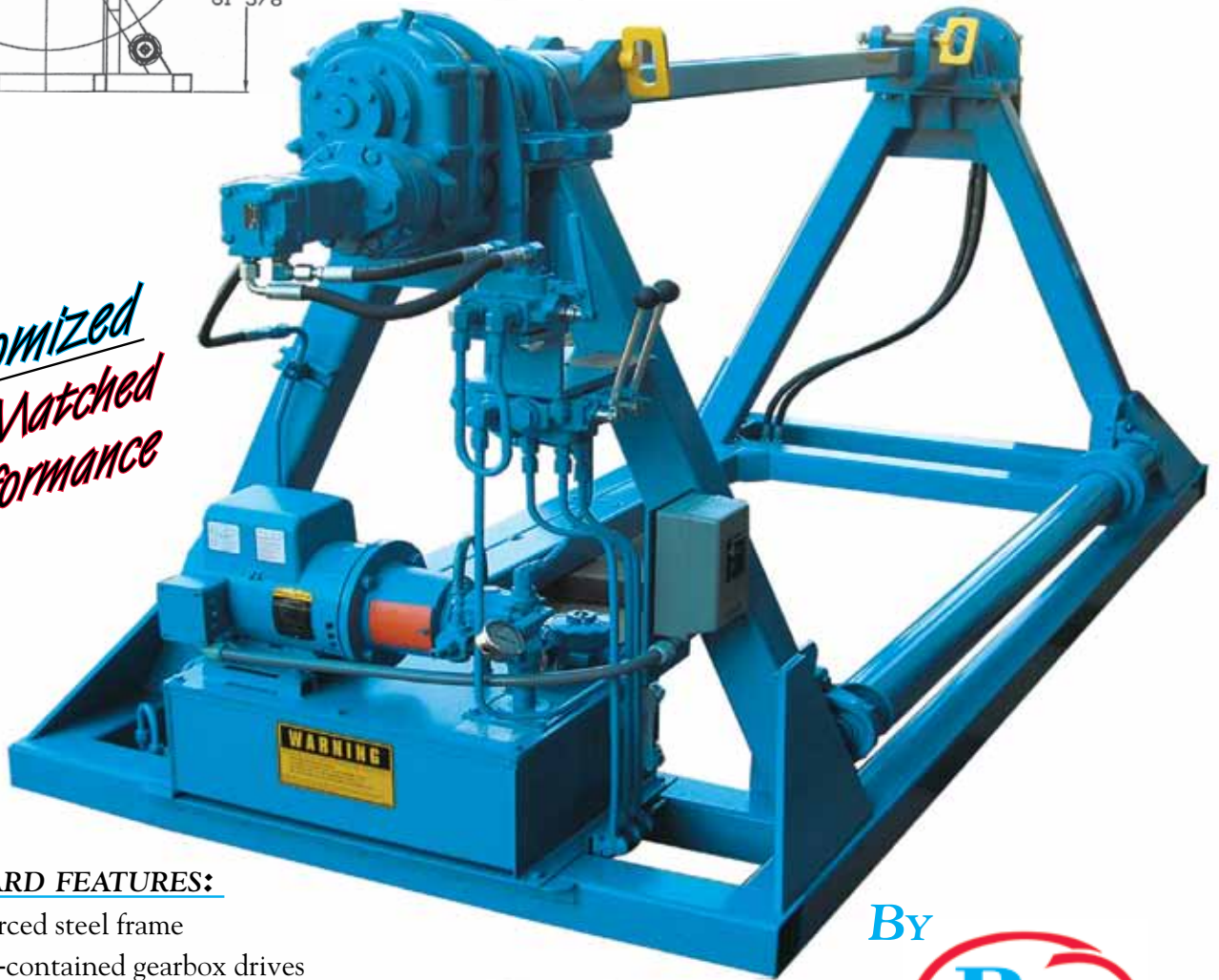
BELT WINDERS

ADJUSTABLE FRAME & FIXED UNITS

BELT WINDER
DUAL HYDRAULIC DRIVES
WITH ROLLER



*Customized
Job-Matched
Performance*



*STANDARD FEATURES:

- Reinforced steel frame
- Self-contained gearbox drives
- Patented pin-loc journal assemblies
- Motor controls / valves / pressure gauge
- Primed & painted: **SAFETY BLUE**

By



ELECTRIC OR HYDRAULIC

*A RECENT & POPULAR BUILD: MODEL #: [EQEW3H48G](#)



FIXED FRAME / 48" BELT WIDTH
3 PHASE MOTOR / 3 HP ELECTRIC DRIVE w / BRAKE

3" SQUARE CORE BAR
UHMW PILLOW BLOCKS / SAFETY PINS
SELF-CONTAINED HYDRAULIC DRIVE

*Optional 4" Core
Adapter Sleeves
Available All
Equipment & Models*



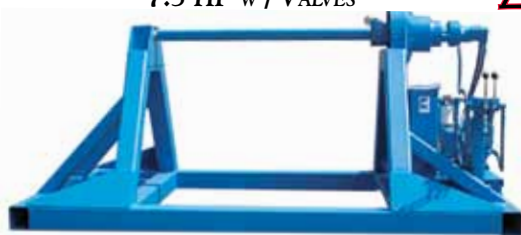
*OPTIONAL GUIDE ROLLER SHOWN
REVERSING, 5.5 RPM / 6,000 LB. CAPACITY
VOLTAGE: 240 / 480

*BeltMaster
Field Winders Are
Engineered For A
Lifetime of Service*



54"W x 84"D MODEL #: [EQHWF4S54](#)
SINGLE HYDRAULIC PLANETARY DRIVE
7.5 HP w / VALVES

48"W x 96"D MODEL #: [EQHWF2DG](#)
DUAL HYDRAULIC DRIVE
3 HP / 2 - SPEED



24" - 72"W x 96"D
MODEL #: [EQHWA7H3D](#)
ADJUSTABLE FRAME / DUAL DRIVE

Belt winders have reversing motors with starter overload protection, reversing drum switch, & free-wheeling capabilities for field & shop use

RPM & PULL RATIO's

These are some machines we have designed recently. They are well proven in field service. Other sizes can be made to almost any capacity. They help ease the chore of winding up belt in the field, an almost impossible task by hand. Designed for a lifetime of service and built to handle the job easily, they make windup a pleasure. They don't come any better than this.

Model #	HP	Speed	Pull at	Roll Size		
			12" Dia.	Width	Dia.	
<u>Fixed Frame</u> Electric Drive with Brake – Capacity 6,000 lbs. *Available Belt Guide Roller Upon Request						
EQEW2H	2 HP	Gear Motor 5.5 RPM	1,858 lbs	36"/ 48"	60"	
EQEW3H	3 HP	Gear Motor 5.5 RPM	2,686 lbs	48"	60"	
<u>Fixed Frame</u> Hydraulic Drive – Capacity 20,000 lbs.						
EQHWF4S	7-1/2 HP	Single Drive 4 RPM	11,280 lbs	48"/ 60"/ 72"	84"	
EQHWF4D	7-1/2 HP	Dual Drive 4 RPM	22,560 lbs	48"/ 60"/ 72"	84"	
*EQHWF2D	7-1/2 HP	Dual Drive 2 RPM	22,560 lbs	48"/ 60"/ 72"	96"	
*w/guide roller						
<u>Adjustable Frame</u> Hydraulic Drive – Capacity 20,000 lbs.						
EQHWA3H4S	3 HP	Single Drive 4.5 RPM	8,2915 lbs	24" – 72"	48"	
EQHWA3H1D	3 HP	Dual Drive 1.5 / 3.0 RPM	14,510 lbs	24" – 72"	96"	
<u>Adjustable Frame</u> Hydraulic Drive – Capacity 20,000 lbs.						
*EQHWA7H3D	7-1/2 HP	Dual Drive 1.5 / 3 RPM	16,583 lbs	24" – 72"	96"	
*2 speed unit						
<u>Adjustable Frame</u> Hydraulic Drive – Capacity 30 – 35,000 lbs.						
EQHWA35K	35,000 lbs.	Dual Drives 1.5 / 3.0 RPM	16,583 lbs	48"	115"	
*EQHWA30K	30,000 lbs.	Dual Drives 3.3 RPM	33,425 lbs	96"	96"	
*2 speed w/hydraulic brakes						



Add desired width & / or "G" for guide roller option to end of model # quotation; example

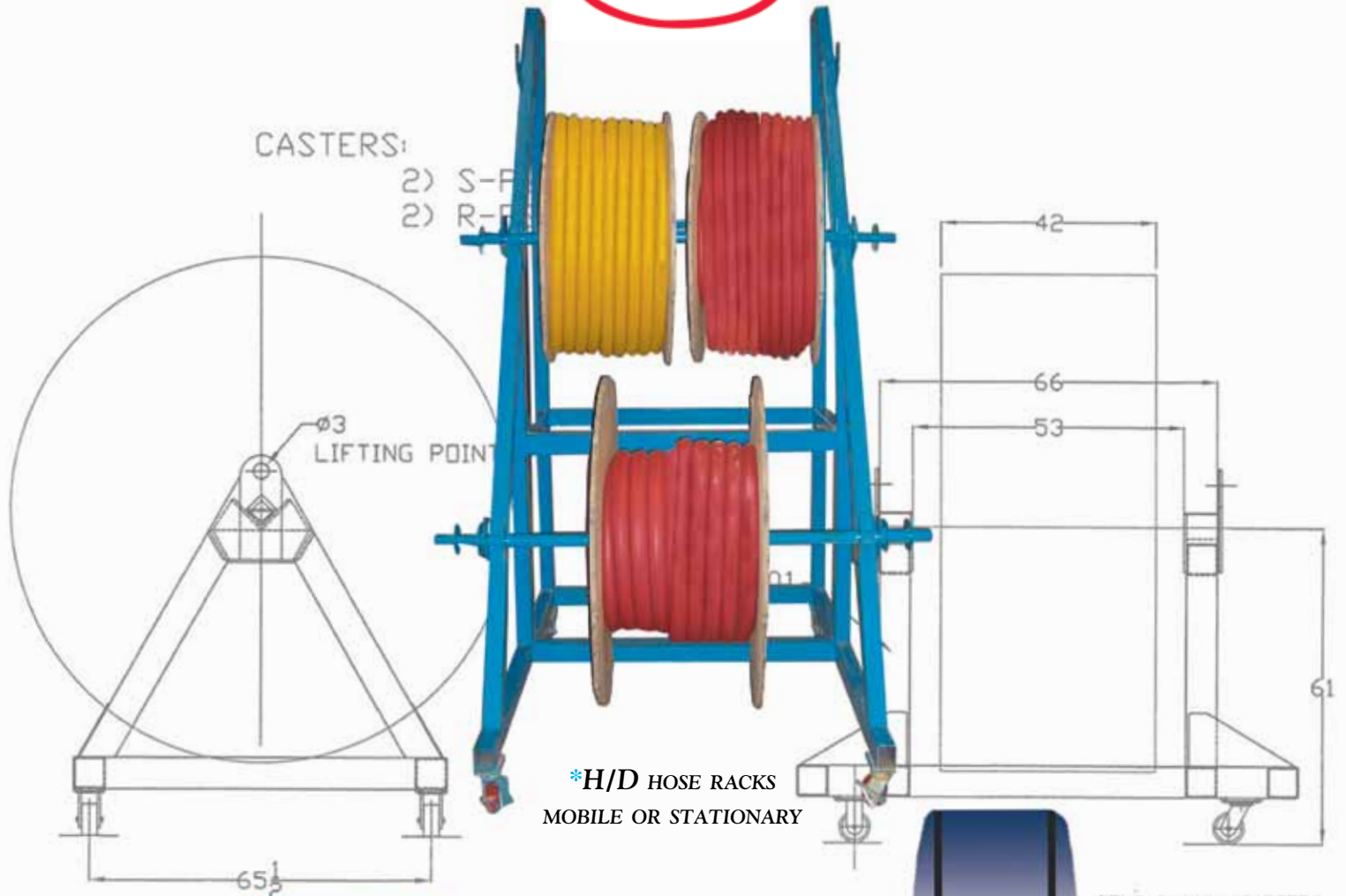
EQEW2H36G (Equipment / Electric Winder / 2 HP 36" Wide / G for Guide Roller)

STANDS / RACKS &



ENGINEERED FOR A LIFETIME OF SERVICE

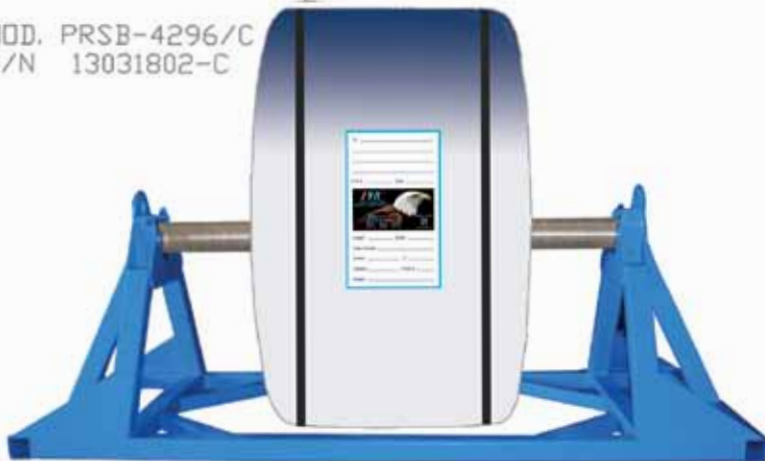
By



*H/D HOSE RACKS
MOBILE OR STATIONARY

MOD. PRSB-4296/C
S/N 13031802-C

BELT STAND w/CASTERS
36"-42"W x 96"DIA
13031802-C



*H/D A-FRAME CONSTRUCTION



*BRAKED OR FREE-WHEELING

SHOP ACCESSORIES

Prolonged storage of heavy weight conveyor belts can harden or stiffen with time. If excessively stored in this condition, flat-spots will form from its own weight and can adversely affect belt training / break in during installation. It is highly recommended during these long periods, that rolls be placed in a properly constructed belt stand designed to handle the load and dissipate the weight of the Core Bar or Shaft from bending.



HEAVY DUTY A-FRAME STRUCTURE



REINFORCED GUSSETED SUPPORTS



HIGH CAPACITY & DIAMETERS



CRADLE SUPPORT W / LIFTING EYELETS



5/16" STEEL TUBING, PAINTED, READY TO GO

★ CORES, COUNTERS, BLADES, JOURNALS, & MORE

★ Service
★ Quality
★ Durability

Belt handling is a common problem to all and no easy task. **Price Rubber** builds a wide array of winders & metering tables to suit your individual needs. Our engineering dept. does it all and our shop accessories make it easy to handle all of your winding / metering requirements.



BELT CORES



BELT COUNTERS



BLADES / KNIFE HOLDERS



PIN-LOC JOURNALS

★ Used throughout all **Price** factories

WEIGHT & DIAMETERS

MOBILE & STATIONARY

Nothing is handier than a belt stand for storing and reeling off belt in popular sizes. A belt warehouse can be built over a period of time at modest cost in equipment that never wears out. Savings in labor make it worthwhile.

Model #	*Special Features	Capacity	Roll Size	
			Width	Dia.
EQS24308	↑	10,000 lbs	24"– 30"	96"
	* Belt Stands			
EQS24308C	Casters w/ Floor Brakes	10,000 lbs.	24"– 30"	96"
EQS36428	↓	13,000 lbs	36"– 42"	96"
EQS36428C	Casters w/ Floor Brakes	13,000 lbs	36"– 42"	96"
EQS48548	↓	16,500 lbs	48"– 54"	96"
EQS48548C	Casters w/ Floor Brakes	16,500 lbs	48"– 54"	96"
EQS60728	↓	22,000 lbs	60"– 72"	96"
EQS60728C	Casters w/ Floor Brakes	22,000 lbs	60"– 72"	96"
EQS36X120	↓	18,000 lbs	36"	120"
EQS42X144	↓	30,000 lbs	42"	144"
EQS72X144	↓	50,000 lbs	72"	144"
	* Hose Rack			
EQR60X72C	Casters w/ Floor Brakes	2, 3, or 4 Bar System	60" WD. X 72" HT.	

 **BELT ROLL**



GAUGE CALCULATOR

PRC's roll calculators are just the tool for calculating unknown diameters & belt weights. Easy to use, this little gem will check you out for most jobs. Call **1-888-778-7707** to receive your's **FREE** & for instant computerized belt modeling on design problems.

CUSTOM EQUIPMENT

The Conveyor belt market is a widely spread heavy industry. However, the problems of cutting, winding, vulcanizing and hauling are common to all. **Price Rubber** has designed many pieces of equipment for use in the main plant at Montgomery, Alabama for many of these problems. Most of this equipment is for special application and much of it is patented.



*AUXILIARY SLITTER WINDUP FOR
TANDEM CUTS*



PORTABLE FIELD WINDERS



STEEL CABLE WINDERS



AUXILIARY BELT MOVERS



TEXAS TRAILER WINDUPS



*TANDEM AXLE CARRIAGE W/ OUTRIGGER
STANCHIONS*



*We make standard & custom made equipment for handling conveyor belt & steel cable
Call **1-888-778-7707** for information & pricing*



*BeltMaster Shop
& Field Equipment*



CREATING ENGINEERED HANDLING SOLUTIONS
INCREASED ASSURANCE AGAINST BELT DAMAGE
OPERATIONAL SAVINGS MAXIMIZING YOUR INVESTMENT

Price Rubber Corp.

2733 GUNTER PARK DRIVE WEST • MONTGOMERY, ALABAMA 36109
WATTS: (888) 778-7707 • FAX: (334) 279-5603



Made in U.S.A.